

LFW10 Temperature Transmitter

FEATURES

- Up to 5 installation and output options available
- New industrial appearance fast installation design, suitable for quick installation
- Imported Heraeus A-level sensor, high precision, fast response, low temperature drift
- Excellent anti-interference ability, CE certification, IP65, RoHS



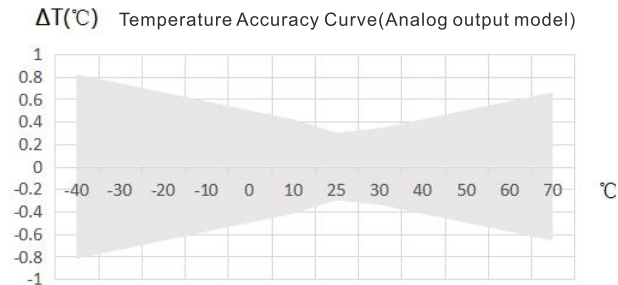
DESCRIPTION

LFW10 Temperature Transmitter is a transmitter specially designed for industrial applications. It is specially designed for lightning surge, electrostatic discharge and group pulse pressure, and has strong anti-interference ability. There are five installation methods: wall hanging, air duct/water pipe, split, and clamp. Three output modes of current, voltage and thermal resistance are optional, strong site installation adaptability.. The spring screw/terminal design is suitable for quick installation. It can be widely used in HVAC, buildings, warehouses and other places where temperature detection is required.

SPECIFICATION

Sensor	High-precision thermal resistance, see Order Reference No.(resistance output type /PT1000, class A (analog output type)
Output	For resistance value, see Order Reference No. and Thermal Resistance Indexing Table/4~20mA or 0~10VDC, 0~5VDC
Thermal Resistance	See Order Reference No. and Thermal Resistance Indexing Table
Accuracy	Typical 0.2~0.5°C@0/25°C, see Order Reference No. ±0.3°C@25°C, see Temperature Accuracy Curve for details
Power Supply	Voltage type 15~35VDC/24VAC±20%
	Current type 18.5~35VDC (RL=500Q) 8.5~35VDC (RL=0)
Output Load	(Analog output type): ≤500Q (current type), ≥2kQ (0~5V), ≥3kQ (0~10V)
Shell Material	PC housing, stainless steel probe (6MM) and sleeve
Working Environment	-40~70°C, 0~95%RH (non-condensing)
Protection level	IP65

TEMPERATURE ACCURACY CURVE



ORDER REF NO.

Code and description					Remark		
LFW10-1	Wall Mounted Temperature Transmitter		LFW10-4	Split Type Temperature Transmitter		Model	
LFW10-2	Duct Type Temperature Transmitter		LFW10-5	Clamp Type Temperature Transmitter			
LFW10-3	WaterPipe Type Temperature Transmitter						
	V10	0~10VDC(3-wire)		0	PT1000, ±0.2℃@0℃		Humidity range
	A4	4~20mA(2-wire)		1	PT100, ±0.2℃@0℃		
	V5	0~5VDC(3-wire)		2	NTC20K, ±0.3℃@25℃		
				6	NTC10K, ±0.3℃@25℃		
	0	NO					Temperature range
	1	0~50℃					
	2	-20~60℃					
	8	Others (Customer specified)					
	0	65MM					Probe length (LFW10-2/10-3)
	1	100MM					
	2	200MM					
	3	150MM					
	8	Others (Customer specified)					
LFW10-2	A4	1	2	Selection Example			

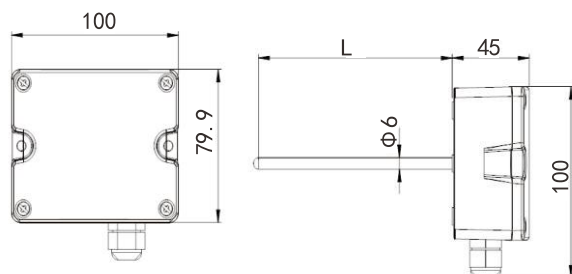
① Example LFW10-2A412 represents the duct type, the temperature output is 4~20mA, the temperature range is 0~50 $^{\circ}\text{C}$ and the probe length is 65MM.

② Only when the temperature output options are V10, A4, and V5, the corresponding temperature range 1-8 should be selected; otherwise, only choose 0.

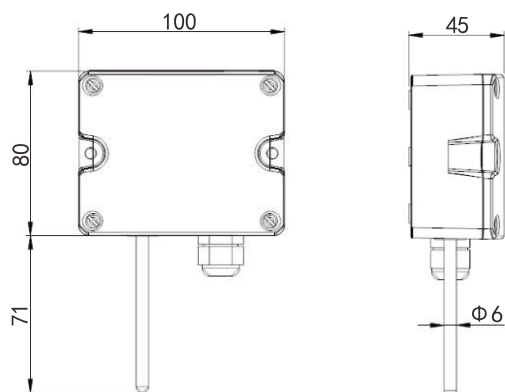
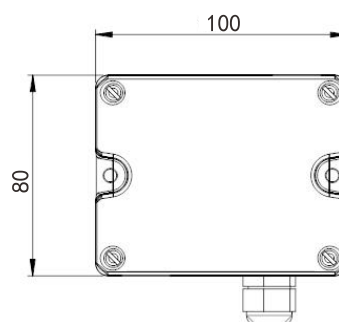
③ The accuracy of the LFW105 clamp type is related to the pipe wall material, installation, ambient temperature, wind speed, and etc., difficult to achieve above accuracy.

④ The standard cable length of LFW104 is 1m. If needs longer cable, integer meter number need be added, and the length code should be added at the end. Example: LFW10-4A41-2. It means the cable length is 2m.

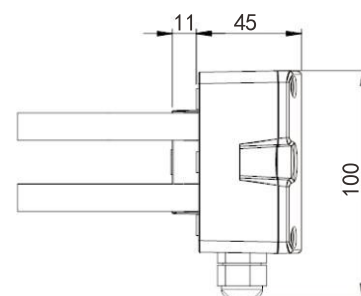
DIMENSION (mm)



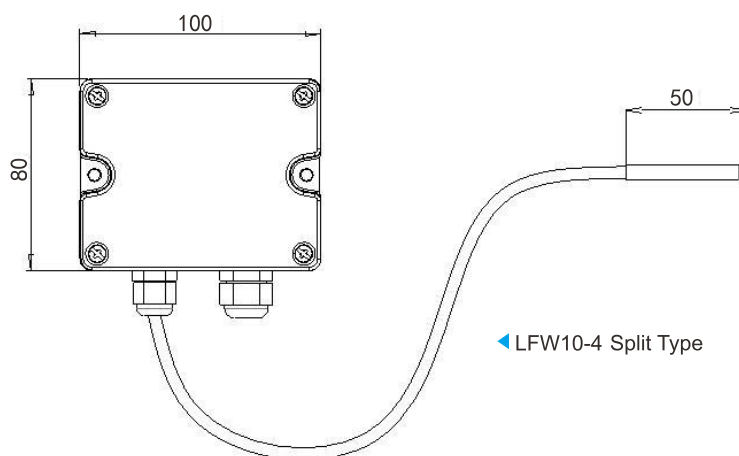
▲ LFW10-2/LFW10-3
Duct/Pipe Type



▲ LFW10-1
Wall Mounted Type



▲ LFW10-5
Clamp Type



◀ LFW10-4 Split Type