

## FEATURES

- With high-precision MEMS micro-pressure core, wide working temperature range and high accuracy;
- LCD digital display screen;
- Perfect overvoltage and reverse protection, high long-term reliability.
- Adjustable measurement range;
- Strong stability and long service life;
- IP65 protection housing



## DESCRIPTION

LFS73 Explosion-proof & High-temperature integrated Air Velocity/Air Volume Transmitter is a kind of transmitter suitable for high temperature explosion-proof environment of gas flow measurement, it can convert the flow rate / flow of gas into electrical signals, and transmit it to the control system. Measurement range can be adjusted through the button on site. Using IP65 protection housing, which is suitable for energy management system, VAV and fan control, environmental pollution control, smoke cover control, oven and boiler ventilation control and other fields.

## SPECIFICATION

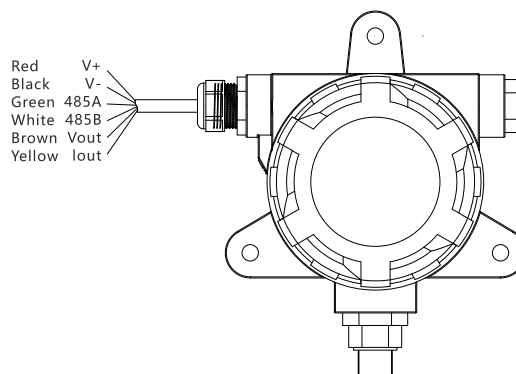
Measurement medium	Air or neutral gas
Range	Air velocity : 0 ~ 30m/s(range can be adjusted between 5 ~ 30m/s) 0 ~ 100m/s(range can be adjusted between 35 ~ 100m/s) Air volume : customized air volume (Max. 99999m³/h)
Overload pressure	10KPa(0~30m/s);80KPa(0~100m/s)
Accuracy <sup>①</sup>	±3.0%FS (Air velocity > 3m/s)
Working temperature	Main Unit: -20℃～70℃; probe: -40℃～450℃
Compensation temperature	-10℃～60℃
Storage temperature	Main Unit: -40℃～80℃
Response time	0.5s/1.0s (default) / 2s / 4s
Ingress Protection	IP65
Electrical interface	Six-core wire, cable diameter of 8mm
Output signal	4～20mA&0～10VDC &RS485
Power Supply <sup>②</sup>	12～30VDC/24VAC±20%
Power consumption	≤1.5W
Shell material	Cast aluminium
Communication	RS-485 standard Interface, Modbus RTU protocol
Certification project	ROHS,CE
Explosion-proof grade	Ex db IIC T6 Gb
Display	LCD backlit digital display

① Environmental conditions: temperature: 20℃, humidity: 45% RH, atmospheric pressure: 1035 hPa.

② When the product uses the AC power supply, it is recommended to use the isolated AC power supply.

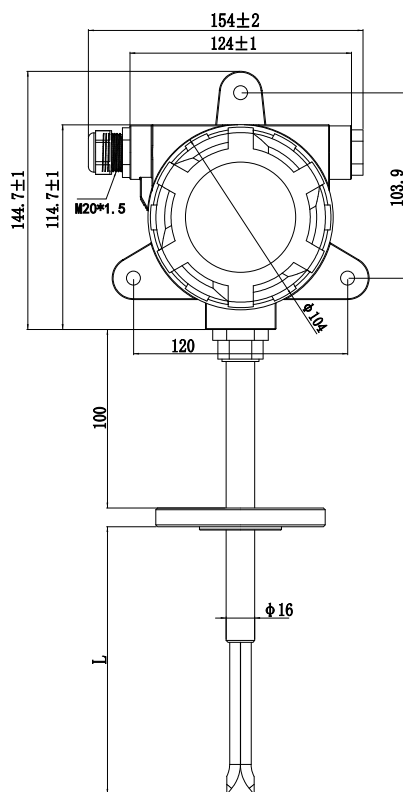
## WIRING

Note: The wiring shall be operated by qualified technicians. When wiring, the transmitter must stop supplying power. The default length of the product's own cable is 1 meter.

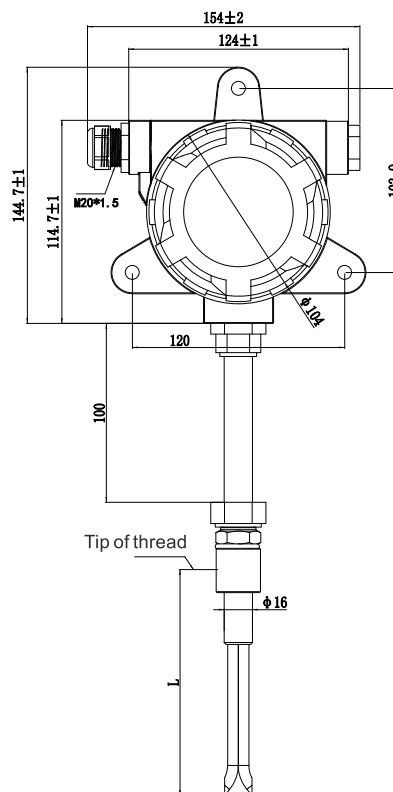
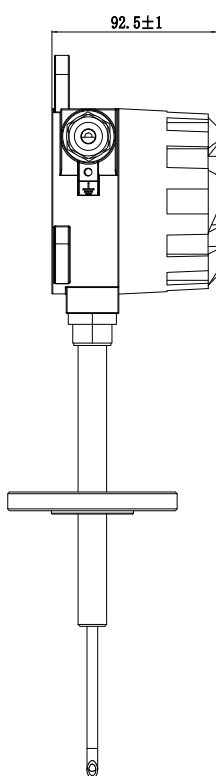


Wire function	Color	Wire instructions	Remarks
V+	Red	Positive terminal	
V-	Black	Negative terminal	
485A	Green	485 Communication interface	For different output, Only reserve needed wires.
485B	White		
Vout	Brown	0-10VDC voltage output port, connect to Power+ of the multimeter, and the other end of the multimeter connect to V-.	
Iout	Yellow	4-20mA current output port, connect to Power+ of the multimeter, and the other end of the multimeter connect to V-.	

## DIMENSION(mm)

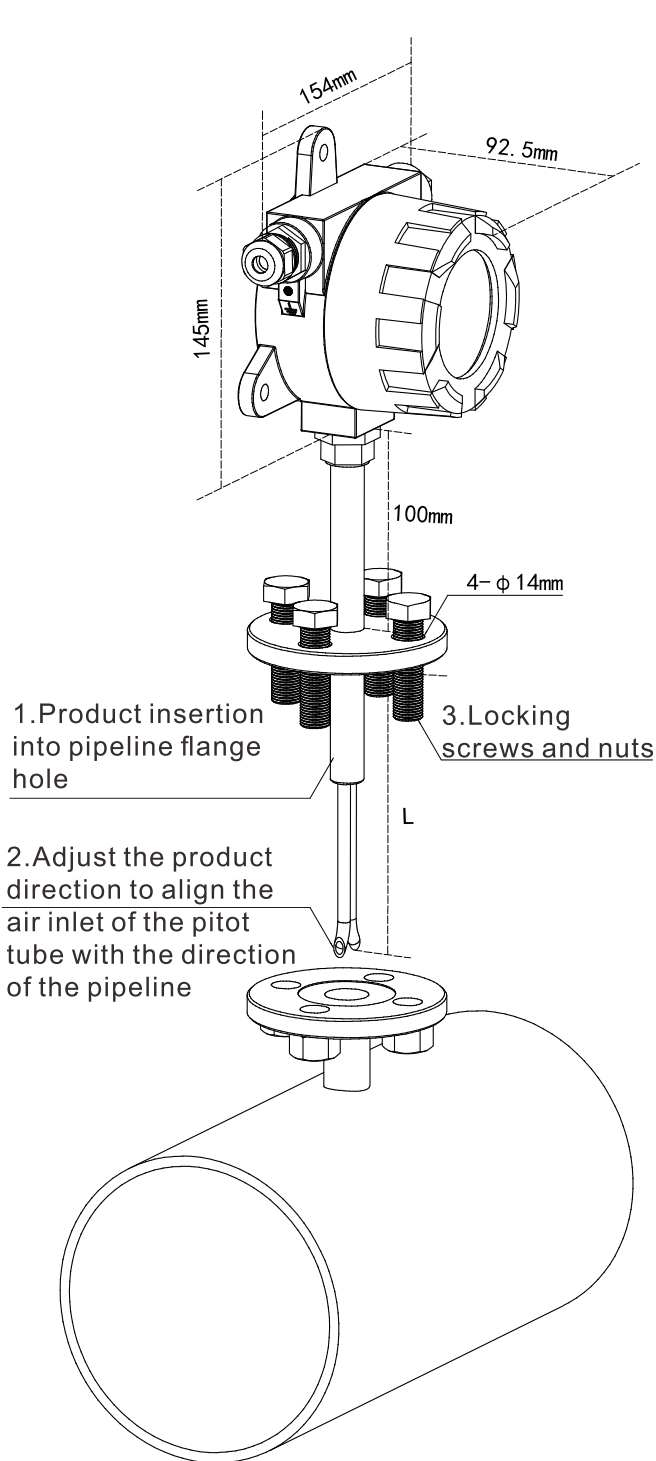


Flange installation products

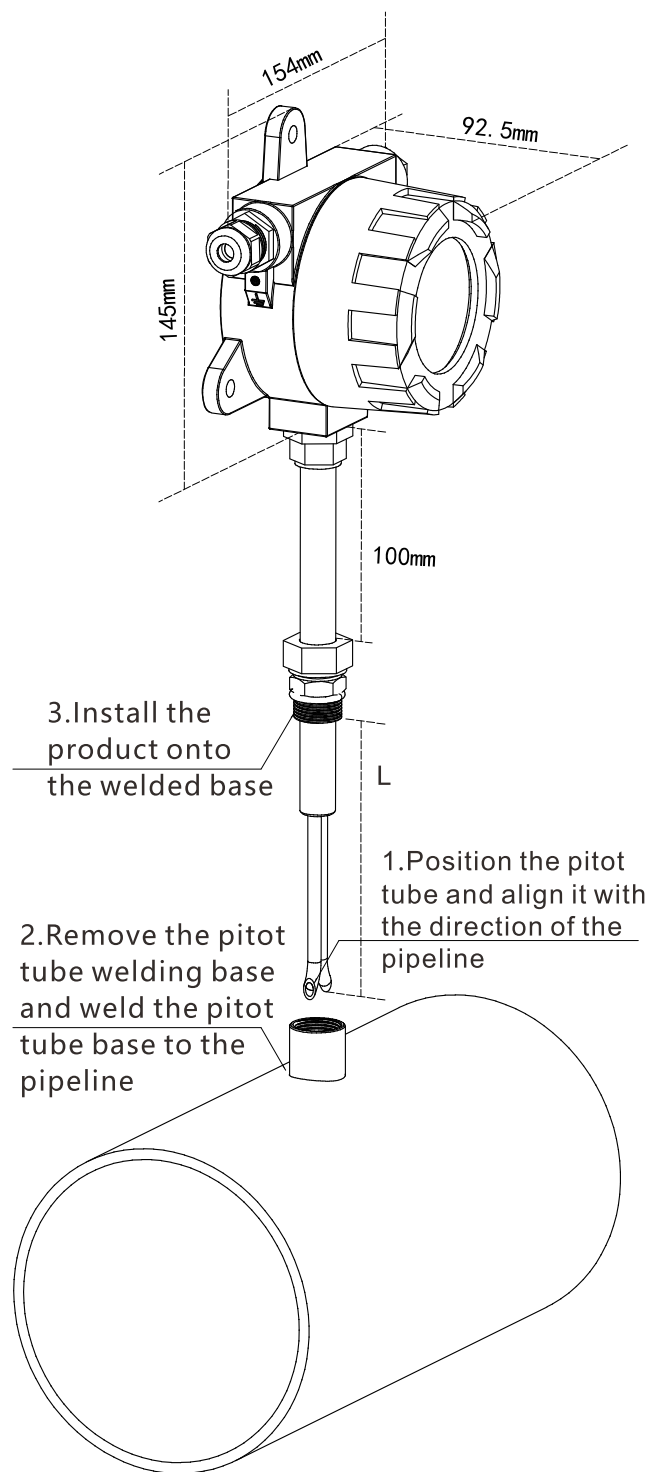


Thread installation products

## Installation method



Flange installation



Threaded installation

## ORDER REF NO.

LFS73-	Model					Notes
	1	0-30m/s （The measuring range can be adjusted between 5-30 m/s）				Range
	2	0-100m/s （The measuring range can be adjusted between 35-100 m/s）				
	3	Air volume Customized (max 99999 m³/h)				
	A	4-20mA&RS485				Output
	B	4-20mA&0-10VDC				
	C	0-10VDC&RS485				
	L5	50mm				Insertion depth into duct--L
	L10	100mm				
	L15	150mm				
	L20	200mm				
	XX	Customized				
	T15	-40~150℃ （The length of the cold end is about 100mm）				Medium temperature <sup>①</sup>
	T30	-40~300℃ （The length of the cold end is about 150mm）				
	T45	-40~450℃ （The length of the cold end is about 300mm）				
	F	Metal flange				Installation type
	L	Threaded installation				
	XX					Pipe cross-sectional area (m <sup>2</sup> ) The selection of air volume transmitters requires filling in the cross-sectional area of the pipeline
LFS73	1	A	L15	T15	F	
LFS73-1AL15T15F range: 0-30m/s、output: 4-20mA&RS485、insertion depth into duct: 150mm、medium temperature: -40~150℃、Installation type: metal flange						

① For T30/T45 products, the probe is equipped with a heat sink by default, and the length of the heat sink is about 10cm., Cold end length refers to the length from the product host to the installation pipeline.