

FEATURES

- Use MEMS micro pressure core, with high accuracy and wide working temperature range;
- LCD digital display with clear reading;
- Zero button available, pressure range adjustable;
- Strong stability, long service life;
- IP65 protection level housing.



DESCRIPTION

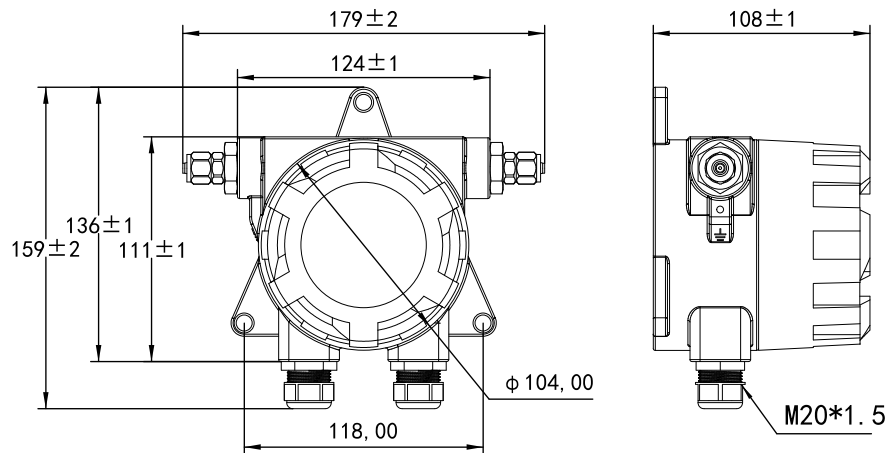
LFM76 Explosion-proof Differential Pressure Transmitter is a high accuracy and high stability device designed for explosion risk environment. It is equipped with multiple optional pressure ranges, with easy on-site adjustment through buttons. Use Ip65 housing, suitable for energy management systems, HVAC, VAV and fan control, environmental pollution control, pressure and smoke hood control of static pipeline and clean room, oven pressurization, and boiler ventilation control.

SPECIFICATION

Measurement Medium	Air or neutral gas
Pressure Range	$\pm 100\text{Pa} \sim \pm 10000\text{Pa}$ (customized)
Over Voltage	10KPa; 80KPa (LFM76-3)
Accuracy	$\pm 1.0\% \text{FS}$
Working Temperature	$-20^{\circ}\text{C} \sim 80^{\circ}\text{C}$
Compensation Temperature	$-10^{\circ}\text{C} \sim 60^{\circ}\text{C}$
Storage Temperature	$-40^{\circ}\text{C} \sim 85^{\circ}\text{C}$
Response Time	0.5s(default) / 1.0s / 2s / 4s
Protection Degree	IP65
Pressure Connection	Stainless steel 1/2" quick connection
Output Signal	4~20mA / 0~10VDC / RS485
Power Supply ①	12~30VDC / 24VAC $\pm 20\%$
Power Dissipation	$\leq 1.5\text{W}$
Shell Material	Cast Aluminium
Communication	RS-485 standard interface, Modbus RTU protocol
Certification	ROHS, CE
Explosion-Proof Cert	EXd IIC T6 Gb
Display	LCD digital display
Weight (Approximate)	1362g

①When the product is powered by AC power, it is recommended to use an isolated AC power supply.

DIMENSION(mm)

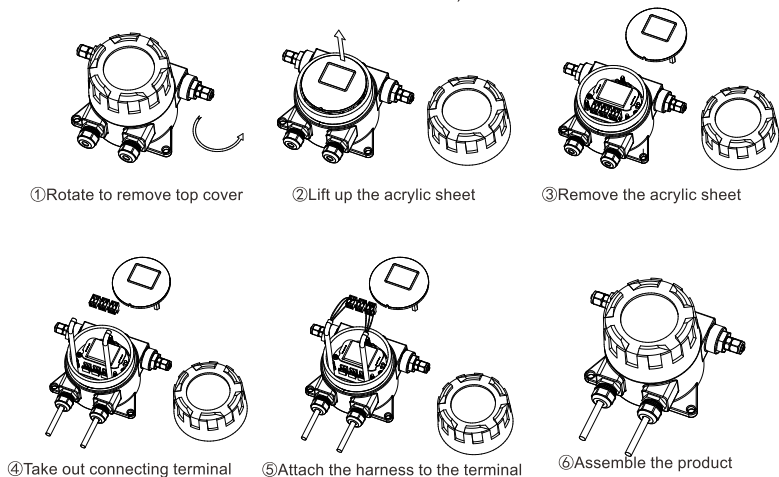
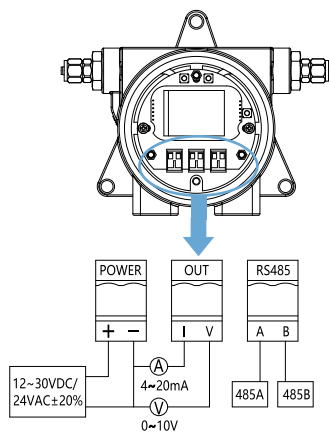


WIRING INSTRUCTION

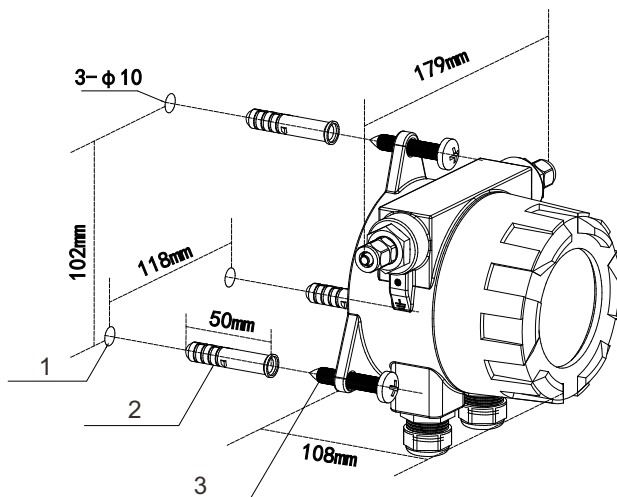
Attention: Wiring should be operated by qualified technical personnel. When wiring, the transmitter must be disconnected from supplying power.

Specific operation steps for wiring:

(Note: Wire diameter D must meet: $7\text{mm} \leq D \leq 12\text{mm}$)



INSTALLATION METHOD



1. Drill
2. Embedding expansion pipes
3. Lock the product with screws

ORDER REF NO.

Code and Description			Remark
LFM76-			Model
	1	-100Pa~100pa	Pressure Range
	2	-1000Pa~1000Pa	
	3	-10000Pa~10000Pa	
	X	Special requirements	
	A	4~20mA / RS485	Output Mode
	B	4~20mA / 0~10VDC	
	C	0~10VDC / RS-485	

LFM76-2A	Range : $\pm 1000\text{Pa}$, Output : 4~20mA / RS-485 Double Output	Example
----------	--	---------