

LFM52 Differential Pressure Transmitter

FEATURES

- Adopt high accuracy of MEMS differential pressure sensor, wide temperature compensation, sensitive pressure response.
- 5-digit LCD digital display,clear in appearance
- Zero point button available on site, optional pressure range.
- Strong stability, long service life
- Protect level IP65.



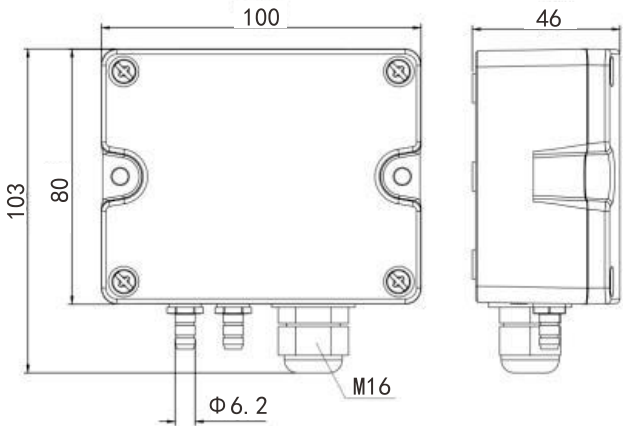
DESCRIPTION

LFM52 differential pressure transmitter is the latest release. It has flexibility of multi-range sensor, high function of single range sensor, and is ideal for industrial application. The differential pressure transmitter has built in multiple optional pressure range and unit selection, and is easily to adjust through built-in DIP switch. The shell protect is IP65 and equipped with stainless steel conduit for convenient wire arrangement. It is widely used in HVAC, energy management system, VAV and fan control, clean room pressure, smoke hood control, oven pressurization, furnace ventilation, furnace ventilation control etc.

SPECIFICATION

Measured Medium	Air or Neutral gas			
Measurement Range	±100Pa, ±1000Pa, ±10000Pa			
Overload pressure	5kPa(LFM526); 10kPa(LFM520);80kPa(LFM522);			
Accuracy	±1%F.S			
Working temperature	-20℃~70℃	Compensation temperature		-10℃~60℃
Storage temperature	-40℃~70℃			
Response time	0.5s(Default) / 1.0s/2s/4s			
Protection degree	IP65			
Pressure connection	Metal barbed interface, Φ6.2mm			
Electrical connection	2-wired	3-wired	4-wired	6 -wired
Signal output	4~20mA(No backlight)	0~5VDC/0~10VDC	RS-485	4~20mA & 0~10VDC
Power supply	12 ~30VDC	12~30VDC/24VAC±20%	9~30VDC	12~30VDC/24VAC±20%
Power consumption	≤1.5W			
Housing material	UL94-V0/PC			
Communication	RS-485 standard interface,Modbus RTU protocol			
Certification	RoHS,CE	Electromagnetic compatibility		EN 61326-1
Display	LCD backlight digital display			

DIMENSION (mm)



ORDER REF NO.

Code and Description				Remark
LFM52				Model
	6	-100~100Pa		Measurement Range
	0	-1000~1000Pa		
	2	-10000~10000Pa		
		N	Without display	Display mode
		O	With display	
			A	Output Mode
			B	
			C	
			D	
			E	
			E1	
LFM52	6	0	B	Selection Example