

FEATURES

- High precision linear stability
- Good reliability and anti-interference performance
- No zero drift, strong anti-interference ability

PRODUCT APPLICATION

- Paper making, refine sugar, mining and metallurgy, drainage, environmental protection
- Water conservancy and hydraulic engineering, iron and steel, petroleum, Pharmaceutical, various beverages
- Petroleum, organic liquid, inorganic liquid, cryogenic fluid



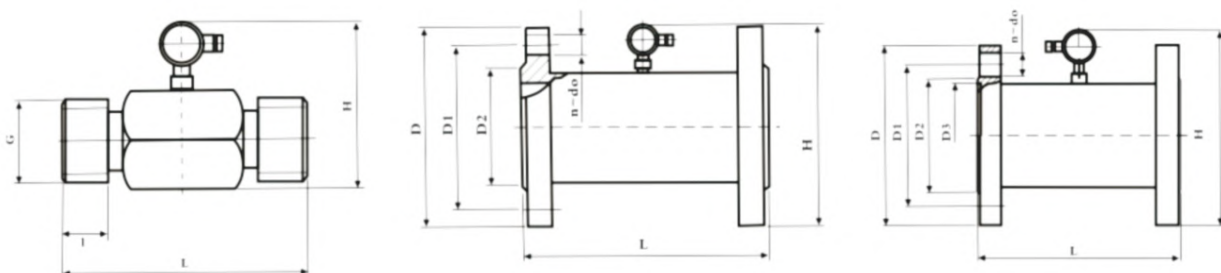
SPECIFICATION

Drift diameter	4-300mm
Max flow	10m/s
Output signal	4-20mA, HART, RS485(optional)
Electrical connection	Flange connection, clamp connection, thread connection
Accuracy	1.0%
Power Supply	24VDC(integrated), Battery powered (integrated)
Consumed power	within 0.5W
Nominal pressure	10MPa, 6.3MPa, 2.5MPa, 1.6MPa
Ambient temperature	-10°C~60°C
Flange material	Stainless steel(304, 316, 316L)
Protection grade	IP65

DRIFT DIAMETER PARAMETER

Nominal diameter(mm)	Flow Range (m³/h)	Fluid Temperature Range (°C)		Nominal Pressure (MPa)
		Integrated	Explosion-proof Type	
10	0.2-1.2	-10°C~80°C, above 80°C need customization	-20°C~70°C	≤DN200 1.6MPa DN250-300 1.0MPa pressure beyond this range need customization
15	0.4-6			
25	1.2-12			
40	3-30			
50	5-50			
80	12-120			
100	20-200			
150	40-400			
200	80-800			
250	120-1200			
300				

DIMENSION IN:MM



ORDER REF NO.

Code and description		Type
LFLWGY		Turbine Flowmeter
DN	4...100...300	Nominal diameter
1	1.6	Nominal Pressure
2	2.5	
3	6.3	
4	10	
1	Flange connection	Pipe Connection Method
2	Pipe thread connection	
3	Clamp connection	
1	4~20mA	Output Signal
2	RS485	
3	4~20mA+RS485	
4	HART	
5	no signal output(battery powered)	
1	Battery powered	Power supply
2	24VDC	
1	-10°C-80°C	Fluid Temperature (°C)
2	-10°C-100°C	
3	-10°C-120°C	
1	304 Stainless steel	Shell Material
2	316 Stainless steel	
1	Integrated	Structure Type
0	Not explosion-proof	Explosion-proof
1	Explosion-proof	
1	1.0%	Accuracy

LFLWGY-DN50	3	1	2	1	1	1	1	0	1	Selection example
-------------	---	---	---	---	---	---	---	---	---	-------------------