

## FEATURES

- Full metal shell, strong and reliable, suitable for harsh working environment.
- High temperature range:-40~180°C.
- Temperature&Humidity full range calibration, high accuracy.
- Sensitive components endure high temperature, with good humidity repeatability.
- The core coating has long-term stability and strong anti pollution ability.
- LCD display, buttons, alarm and other modules optional.



## DESCRIPTION

LFH70 Temperature&humidity Transmitter is a highly reliable product developed for high-precision temperature and humidity measurement in fundamental industrial applications and climate control fields. Its split probe can work in environments with temperatures up to 180 °C. The high-temperature humidity sensitive capacitor has high long-term stability, strong anti pollution ability, and excellent anti electromagnetic interference ability. Comparing to other HVAC transmitters, the innovative metal structure design gives LFH70 the advantage of stronger structure and longer duration in harsh working conditions.

## TECHNICAL PARAMETER

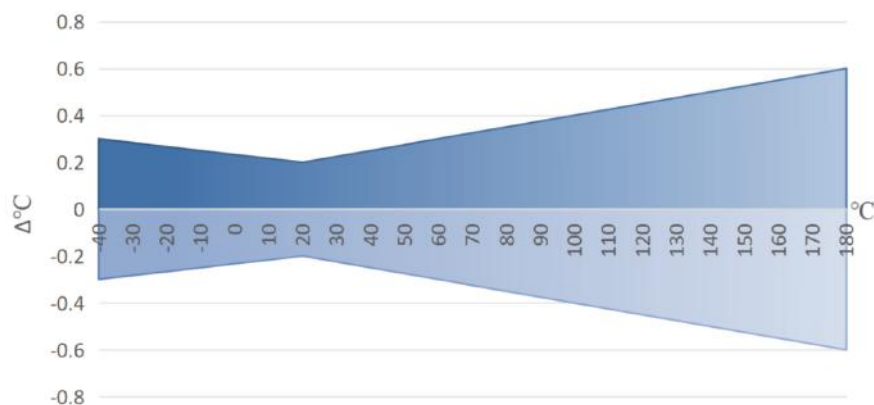
### (1)Relative Humidity

Sensing element	High temp&humidity sensitive capacitor
Range	0-100%
Output	RS485, 0-10V, 4-20mA
Accuracy	≤90%RH@20°C ±2%RH >90%RH@20°C ±2.3%RH
Response time	≤10S

### (2)Temperature

Sensing element	PT1000
Probe operating temperature	-40-180°C
Output	RS485, 0-10V, 4-20mA
Accuracy	±0.2°C@20°C See accuracy curve chart
Power supply	15-35VDC/24VAC±20%
Operating temperature range of electronic components (with LCD)	-20-60°C
Relay	2×SPDT (3A-30VDC/250VAC)
Output Load	≤500Ω (current output) ≥10KΩ (Voltage output)

### (3)Digital sensor temperature accuracy curve



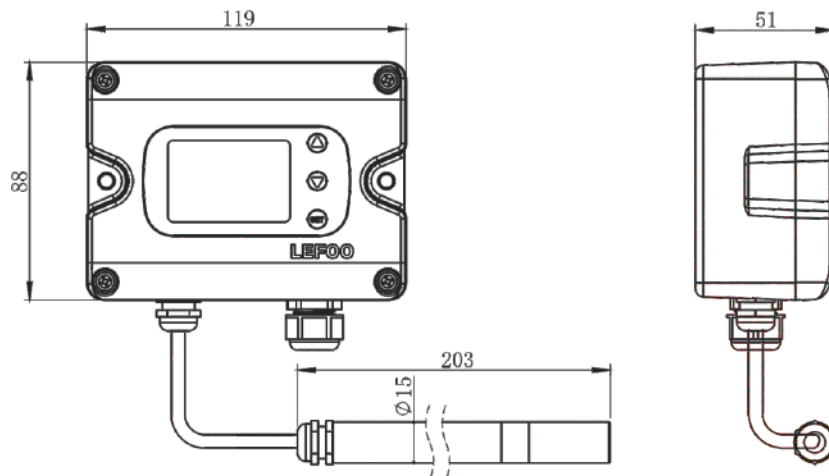
## ORDER REF NO.

Code and Description			Remark
LFH70-	RS	485	Output
	A4	4-20mA	
	V10	0-10V	

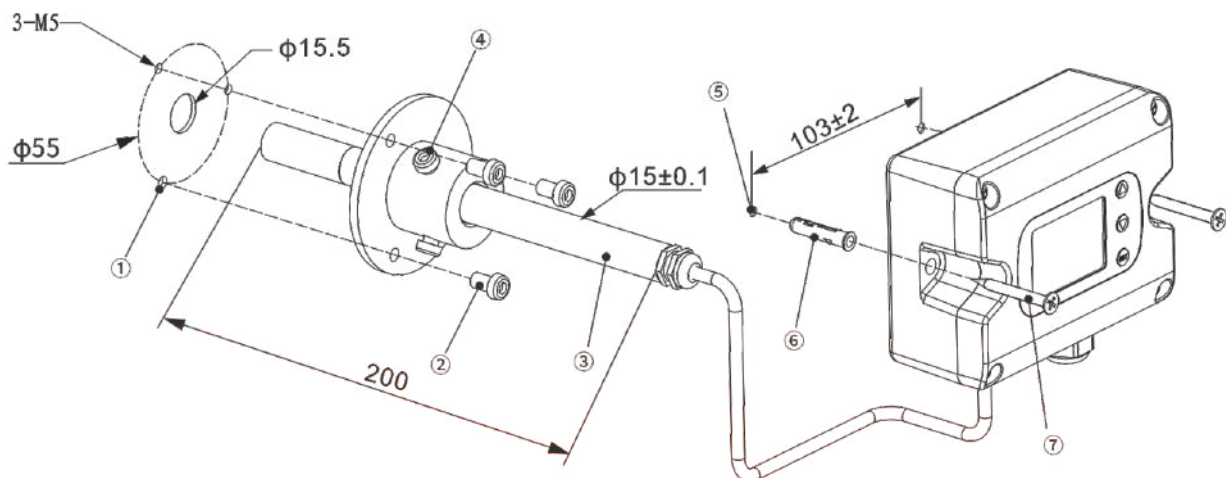
Note: The default length of split type cable is 1 meter, and the length can be added by meter basis, represented by number after the model. The default temperature range for voltage and current type is -20~60 °C, and can be reset by pressing any button.

Model selection example LFH70-A4-2, it means split type temperature and humidity transmitter, 4-20mA output, with LCD external button, customized wire length of 2 meters.

## DIMENSION(mm)



## INSTALLATION DIAGRAM



Air duct: ① open holes, ② install the flange, lock the screw, ③ install the air pipe and adjust the size, ④ lock the screw  
Transmitter box: ⑤ open holes, ⑥ into the expansion tube, ⑦ install the body, locking screws