

FEATURES

- 4-digit LED or LCD on-site display
Supports various types of switch outputs (PNP, NPN, relay)
- Easy parameter configuration via buttons
LED indicators for switch status monitoring
- Multiple process connections available: threaded, Tri-Clamp, etc.



DESCRIPTION

LFDS68 Pressure Switch is a fully electronic device. It uses a high-precision, high-stability silicon piezoresistive sensor with a dedicated signal conditioning circuit. It features: On-site digital display; one channel 4–20 mA analog output; two channel electronic switch outputs or one relay switch output; multiple pressure connection options: threaded or Tri-Clamp.

This compact device integrates pressure measurement, display, output, and control. It is flexible, easy to operate, safe, and reliable, widely used in: Industrial automation; environmental protection; petrochemical industry; water treatment systems.

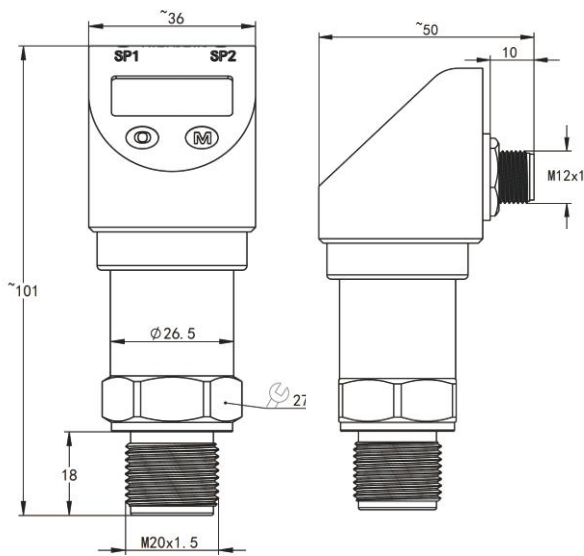
SPECIFICATION

Pressure Range	
Gauge	-100kPa...0~10kPa...60MPa
Absolute	0~10kPa...10MPa
Overload	1.5× full scale
Remark: max 2 Mpa for Tri-Clamp, as per "Pressure Connection"	
Media Compatibility	
Media Type	Liquids and gases compatible with wetted materials
Output & Power Supply	
Output & Power Supply	4~20mADC / Vs=12~32VDC
	4~20mADC+2 electronic switches / Vs=12~32VDC
	4~20mADC+1 relay switch / Vs=18~32VDC
Performance	
Accuracy [®]	±0.5%F.S
Long-Term Stability	±0.3%F.S/year
①Remark: Accuracy is comply with IEC60770 (non-linearity, hysteresis, repeatability)	
Switch Alert	
Switch Type	PNP/NPN
Load Capacity	≤300mA 24VDC
Life Span	> 1 million cycles
Relay Switch Alert	
Switch Type	Relay Switch
Load Capacity	≤1ADC 24VDC
Life Span	~100, 000 cycles
LED Display	
Type	4-digit numeric
Range	-1999~9999
LCD Display	
Features	Analog bar graph, pressure unit display
Range	-1999~9999
Temperature Characteristics	
Compensation Range	0~70°C
Zero Temp Drift	±1.0% F.S. , comparing 25°C ^②
Span Temp Drift	±1.0% F.S. , comparing 25°C ^②
Environmental Conditions	
Temperature Condition	Ambient Temp: -40~70°C (LED Display) , -20~60°C (LCD Display)
	Media Temp: -40~125°C
	Storage Temp: -30~70°C
Protection Rating	IP65
②Exception: ±2.0% F.S. for 10 kPa range , 0~60°C	

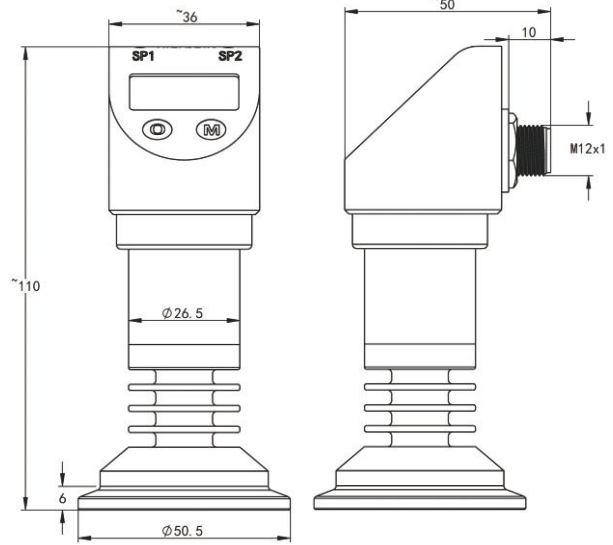
CONSTRUCTION MATERIALS

Component	Material
Pressure Port	Stainless Steel 304
	Stainless Steel 316L
Sensor	316L
O-Rings	NBR (-40~120°C)
	FKM (-20~200°C)
	EPDM (-55~150°C)

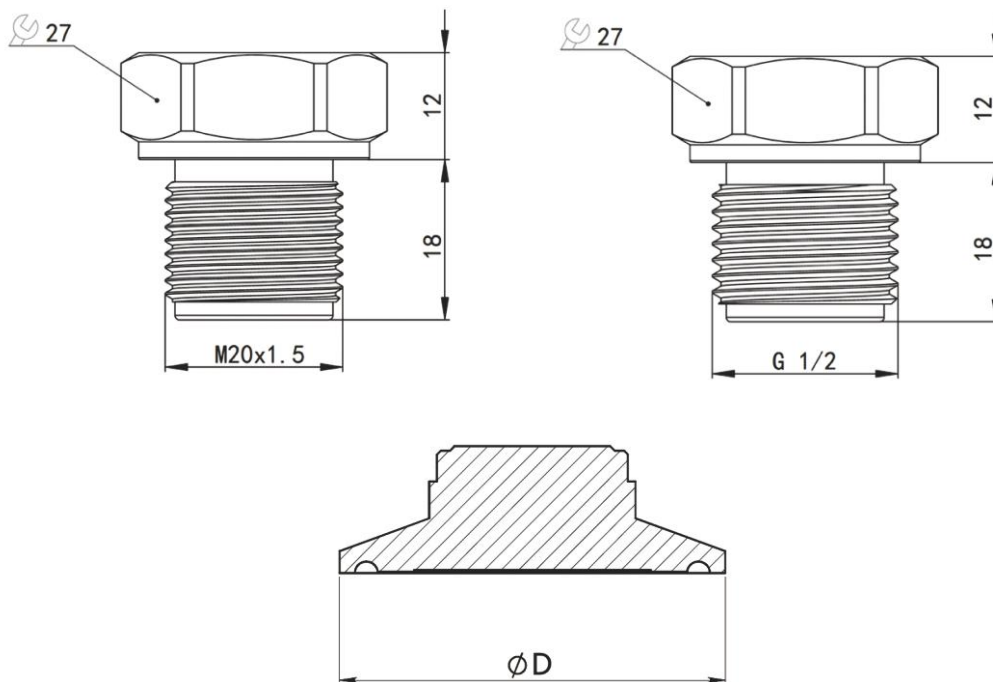
THREADED MOUNTING



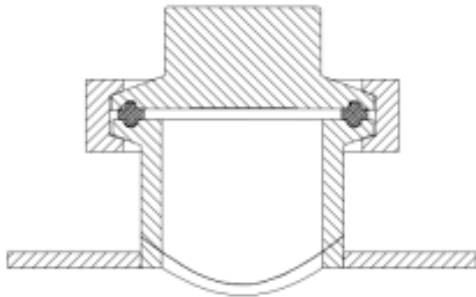
TRI-CLAMP MOUNTING



PRESSURE PORT



INSTALLATION DIMENSIONS



Standard	Size	Diameter (ΦD)	Max Pressure
Tri-Clamp	1-1/2"	50.5	2MPa
Tri-Clamp	2"	64	2MPa
ISO 2852	DN38	50.5	2MPa
ISO 2852	DN40-51	64	2MPa
DIN 32676	DN32-40	50.5	1.6MPa
DIN 32676	DN50	64	1.6MPa

ORDER REF NO.

Code & Description		Remark									
LFDS68	Pressure switch mode	Type									
Range	-100 kPa to 60 Mpa (gauge), 0–10 kPa to 10 MPa (absolute)	Pressure Range									
G	Gauge pressure	Pressure									
A	Absolute pressure										
0.5	±0.5%F.S	Accuracy									
A4	4~20mA	Output									
A4N	4~20mA+2 NPN switches										
A4P	4~20mA+2 PNP switches										
A4D	4~20mA+1 relay switch										
N	2 NPN switches										
P	2 PNP switches										
D	1 relay switch										
M	M12×1, 5-pin	Electrical Connection									
M1	M12×1, 5-pin with 0.5 m cable										
M20	M20*1.5 male thread	Pressure Port									
G2	G1/2 male thread										
K	50.5mm Tri-Clamp										
X	Other clamp sizes										
1	304	Material of Pressure Port									
2	316L										
1	316L	Sensor									
1	FKM O-ring	O-ring									
2	NBR O-ring										
3	EPDM O-ring										
1	LED display	Display									
2	LCD display										
LFDS68	10MPa	A	0.5	D	M	K	2	1	1	1	Example Model