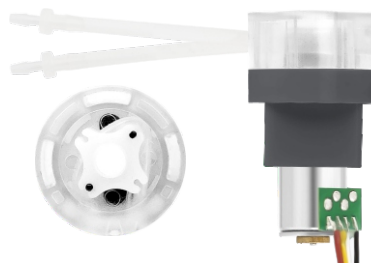


## LFP101A/ST DC Stepper Motor Peristaltic Pump

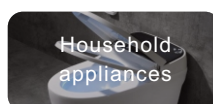
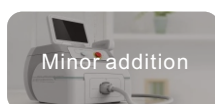
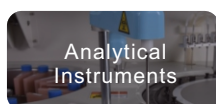
Color X6

### FEATURES

- Micro flow rate design
- Compact structure, mini size, light weight, fine workmanship
- Low noise, smooth running, suitable for gap operation
- Installation method can be customized
- Support PWM speed regulation



### APPLICATION INDUSTRY



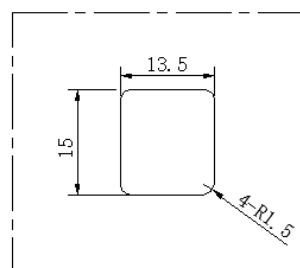
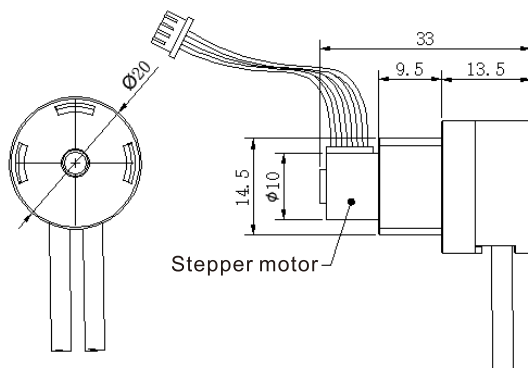
### SPECIFICATIONS

Model	Installation Method	Motor Type	Control Method	Function	Working Voltage	Power	Weight	Working Environment	Rollers
P101AST	Rubber mounting plate (optional)	Micro stepper motor	Drive control (Optional with Driver PLC control)	Precise adjustable flow control	DC5V	≤2W	13.8g	Temperature 0-45°C, Relative Humidity <85%RH	Standard with 2 rollers

### FLOW RATE: ml/min

Voltage	Flow Range	Tube Size	Tube Type
DC5V	0~0.2	0.5*1.5	BPT Tube/Silicone Tube
	0.06~0.7	1*2	
	0.1~1.4	1.5*2.5	

### MOUNTING DIMENSION: mm



Installation hole diagram

#### Remark

1. The above flow parameters are tested under the conditions of room temperature 23°C, standard atmospheric pressure, clean water, suction lift 0.2m, lift 0, and no pressure. For reference only.
2. Pump flow rate can be affected by viscosity, density, medium temperature, ambient temperature, inlet and outlet pressure, suction lift and lift of pump. To ensure the accuracy of the pump, it is necessary to keep the above factors without significant changes.